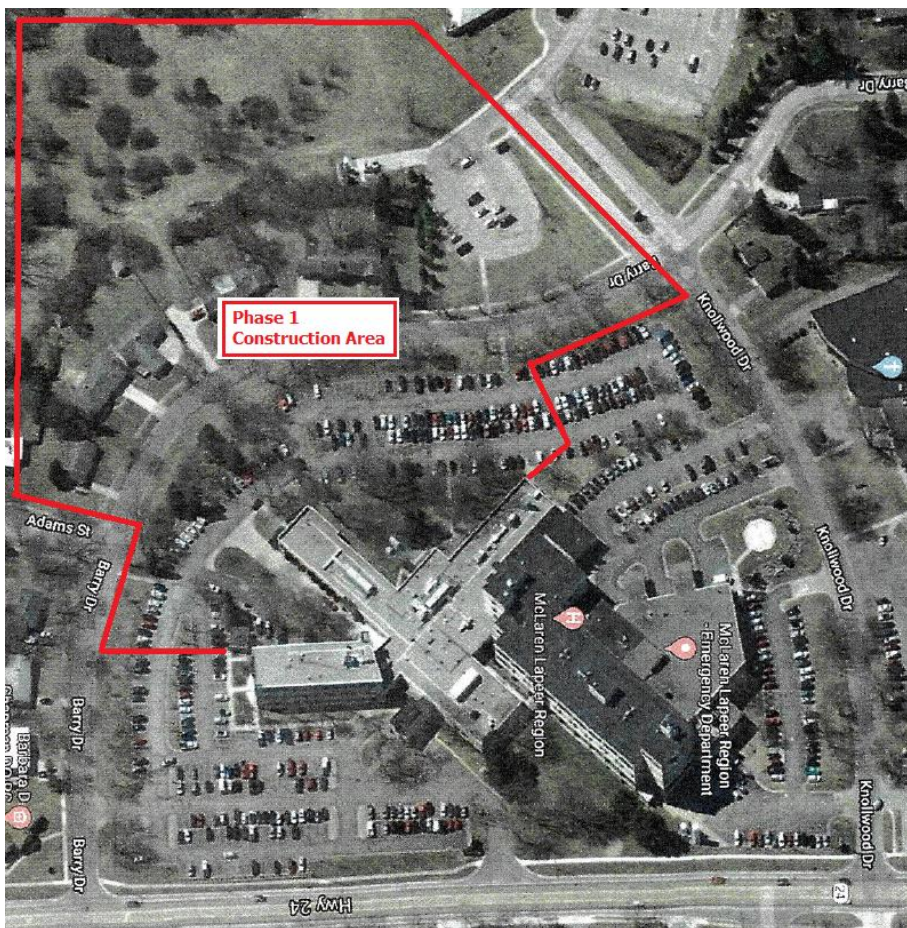




LAPEER REGION

Date: March 12, 2020
To: Everyone McLaren Lapeer Region
From: Denny Fitzpatrick, EMT-PI/C, CHSP, Security/Safety/EMS Manager
Subject: Staff Parking Changes Due to Construction (Step 2)

As most of you are aware, McLaren Lapeer Region has begun work in preparation of the construction of the new medical office building on the McLaren Lapeer Region campus. The work to date has had minimal effect on parking at the hospital but beginning Wednesday, March 18, 2020, we will need to make major changes with parking at McLaren Lapeer Region.



McLaren Lapeer Region Medical Office Building Construction Area

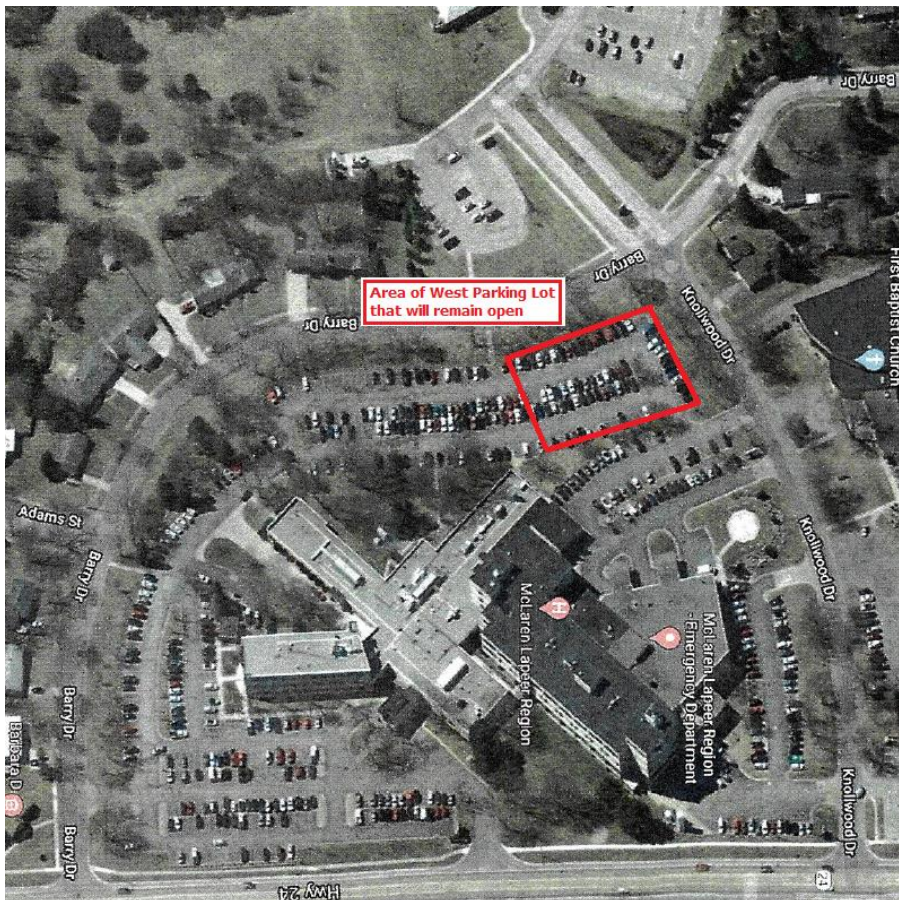
Below you will find instructions on where you can and cannot park during the construction period. The arrangements are not the most ideal, but they are the best that we can do under the circumstance s. I realize that the parking changes will cause some challenges, confusion and frustration for a few months, but I am sure that you will all be happy with the end results.

West Parking Lot

The north portion of the existing West Parking Lot will not be disturbed during the first phase of construction. This will allow us to use this portion of the West Parking Lot for the following:

1. Day-time staff (Any shifts that begin at or after 7:00 AM and end by 6:00 PM).
2. Early arrival Day Shift Staff (5:00 AM-)
3. Physicians
4. Night shift staff members (7:00 PM – 7:30 AM)
5. Afternoon shift staff
6. Day and night shift staff members on the weekends

7:00 AM to 7:30 PM staff members are asked to park in the North Parking, First Baptist Church, Lapeer Trinity United Methodist Church or McLaren Lapeer Region Community Center Parking Lots Monday through Friday.

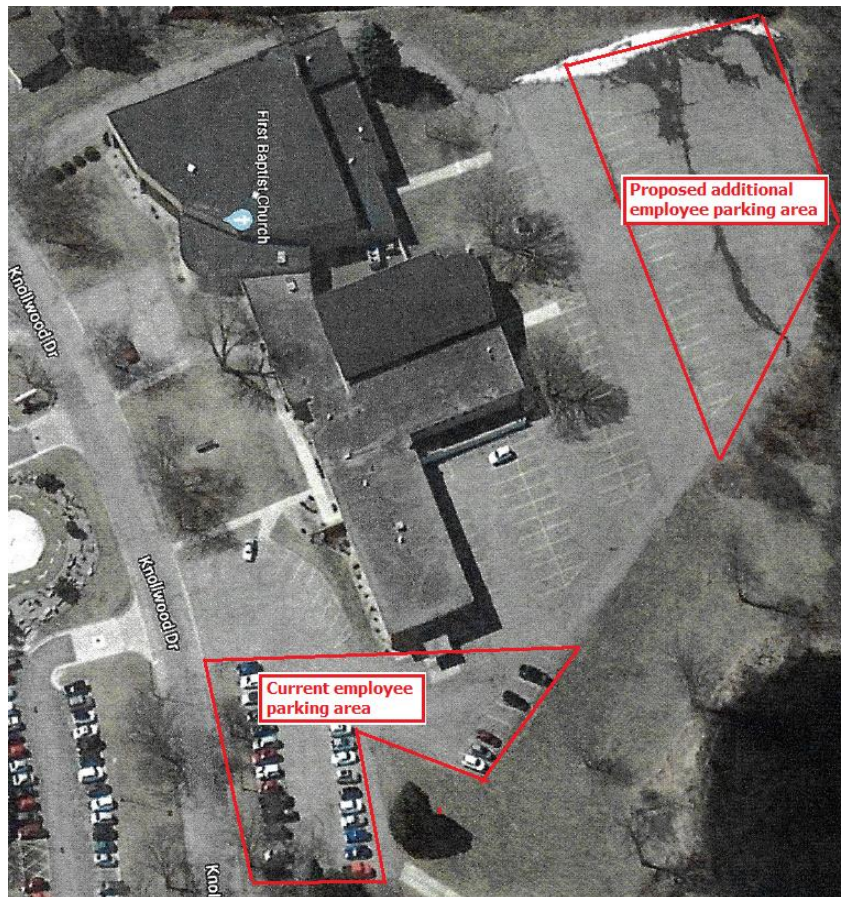


McLaren Lapeer Region West Parking Lot

First Baptist Church Parking Lot

Parking is available in the East and Back Parking Lots at the First Baptist Church. Please do not park in parking spots directly around the church building. We must keep these parking spaces clear for church business. The church lots can be used by the following:

1. 7:00 AM – 7:30 PM Shift staff members
2. Early arrival Day Shift Staff (5:00 AM -)
3. Over-flow parking for all day-time shift employees.
4. Afternoon shift staff members
5. Students (Nursing, Respiratory, Diagnostic Imaging, etc.)
6. Allied health personnel
7. Medical Students



First Baptist Church Parking

Lapeer Trinity United Methodist Church

McLaren Lapeer Region staff members who choose to park at the Lapeer Trinity United Methodist Church are to park in the East Parking lot located behind the church. Please do not park in spots directly around the church or in the lower front parking lot. These parking spaces must remain open for church business.

Employees who park at the Lapeer Trinity United Methodist Church will be transported to and from the site by McLaren Lapeer Region provided mini vans. Transportation services will be provided from 6:00 AM to 9:00 PM. Staff members are encouraged to wait at their vehicles for a van to pick them up. Vans will make continuous rounds between the Methodist Church, Clinic and hospital throughout the day. Staff members can call 810-667-5608 (McLaren Lapeer Region Security Department) to make arrangements to be transported to their vehicle during daytime weekday hours. Staff members who decide to cross North Main Street (M-24) to get to the hospital will do so at their own risk.

The Lapeer Trinity United Methodist Church Parking Lot is to be used by the following:

1. 7:00 AM – 7:30 PM Shift staff members
2. Over-flow parking for all day-time shift employees.
3. Students (Nursing, Respiratory, Diagnostic Imaging, etc.)
4. Allied health personnel
5. Medical Students



Lapeer Trinity Methodist Church Parking

McLaren Lapeer Region Community Medical Center Parking Lot

McLaren Lapeer Region staff members who choose to park at the McLaren Lapeer Region Community Medical Center are to park in the parking lot directly behind the main clinic building. We ask that you use the perimeter parking spots. Please leave the middle parking spots and parking spots directly behind the building for clinic staff members.

Employees who park at the McLaren Lapeer Region Community Medical Center will be transported to and from the site by McLaren Lapeer Region provided mini vans. Transportation services will be provided from 6:00 AM to 9:00 PM. Staff members are encouraged to wait at their vehicles for a van to pick them up. Vans will make continuous rounds between the Methodist Church, Clinic and hospital throughout the day. Staff members can call 810-667-5608 (McLaren Lapeer Region Security Department) to make arrangements to be transported to their vehicle during daytime weekday hours. Staff members who decide to cross North Main Street (M-24) to get to the hospital will do so at their own risk.

The McLaren Lapeer Region Community Medical Center Parking Lot is to be used by the following:

1. 7:00 AM – 7:30 PM Shift staff members
2. Over-flow parking for all day-time shift employees.
3. Students (Nursing, Respiratory, Diagnostic Imaging, etc.)
4. Allied health personnel
5. Medical Students



McLaren Lapeer Region Community Medical Center Parking

North Employee Parking Lot

The North Employee Parking Lot will not be affected during the main construction period. The North Employee Parking Lot can be used by all staff members.

Front Hospital/Emergency Department Parking Lots

The Front Parking Lot and Emergency Department Parking Lots are to remain visitor and patient parking only during the construction period. Hospital staff members are not allowed to park in the Front or Emergency Department Parking Lots.

South Hospital Parking Lot

The main portion of the South Parking Lot will be used for visitor and patient parking. Hospital Volunteer staff members are to park in the South Parking as usual. Hospital employees will be allowed to use parking spaces that face towards the earth berms along Barry Drive. Please be advised that West end of the South Parking Lot will need to be closed beginning Wednesday, March 18, 2020 to allow for parking lot expansion construction. Once the new portion of the South Parking Lot is completed, we will open it up for additional visitor, patient and employee parking.



McLaren Lapeer Region – Karmanos Cancer Center Parking

We will lose the South Cancer Center Parking Lot due to construction. The North Cancer Center Parking Lot will remain and is to be used for Cancer Center business and activities.

An area of parking spaces located at the north end of the parking lot has been designated for hospital managerial staff parking. **Hospital staff parking will not be allowed in any other area of the Cancer Center Parking Lot**



McLaren Lapeer Region – Karmanos Cancer Center Parking